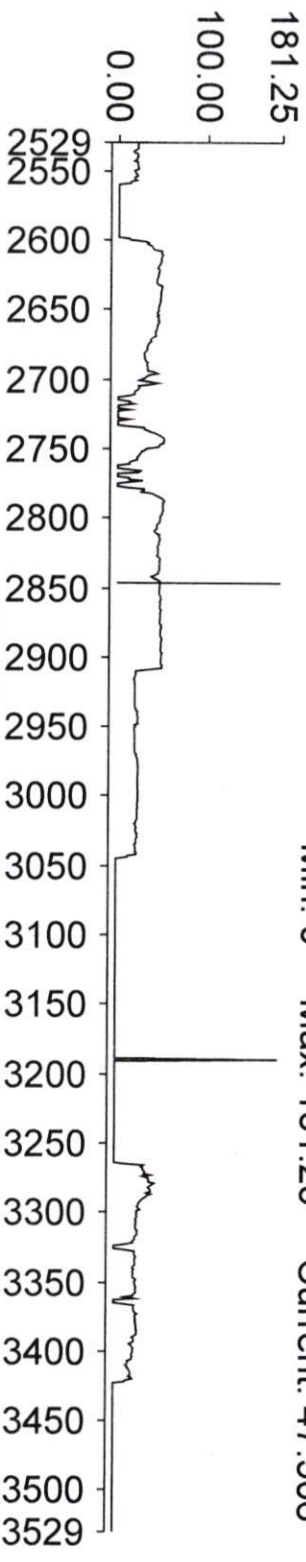


2018 Chevrolet Colorado (RWD) 3.6L V6 (LGZ)

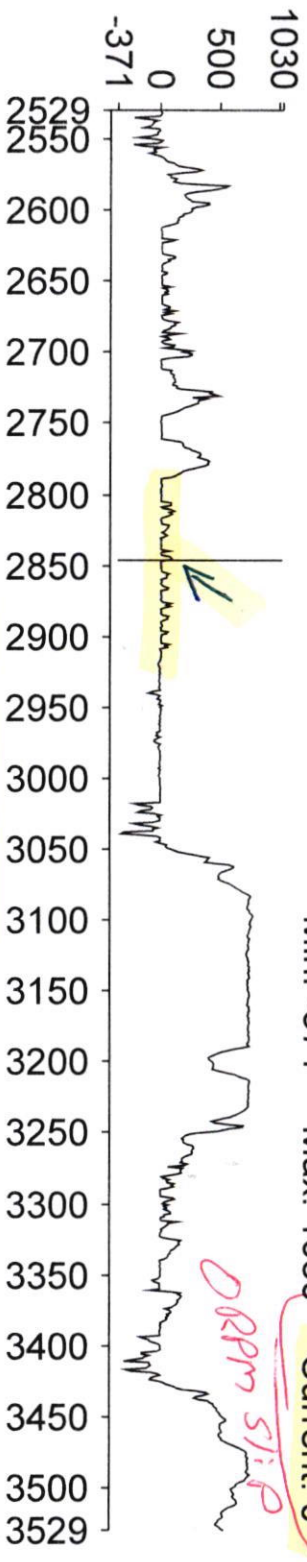
TCC Pressure Control Solenoid Valve Command (psi)

Min: 0 Max: 181.25 Current: 47.506



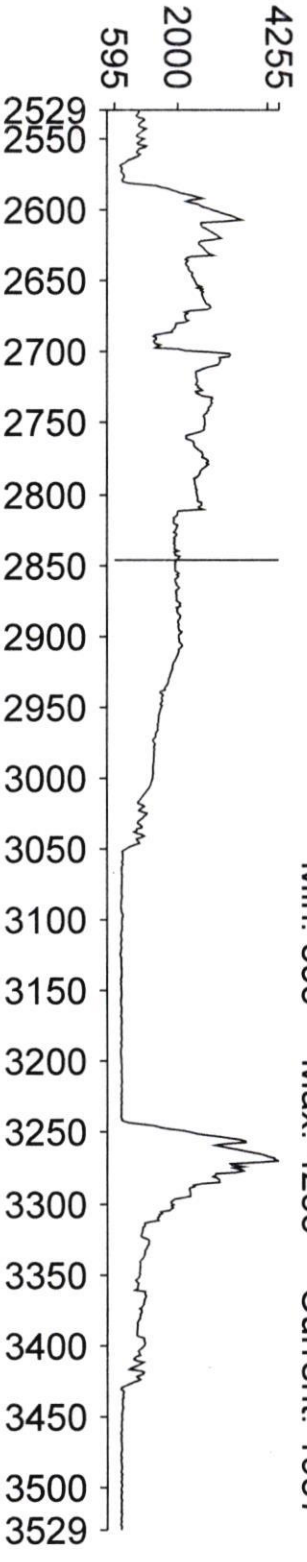
TCC Slip Speed (RPM)

Min: -371 Max: 1030 Current: 0



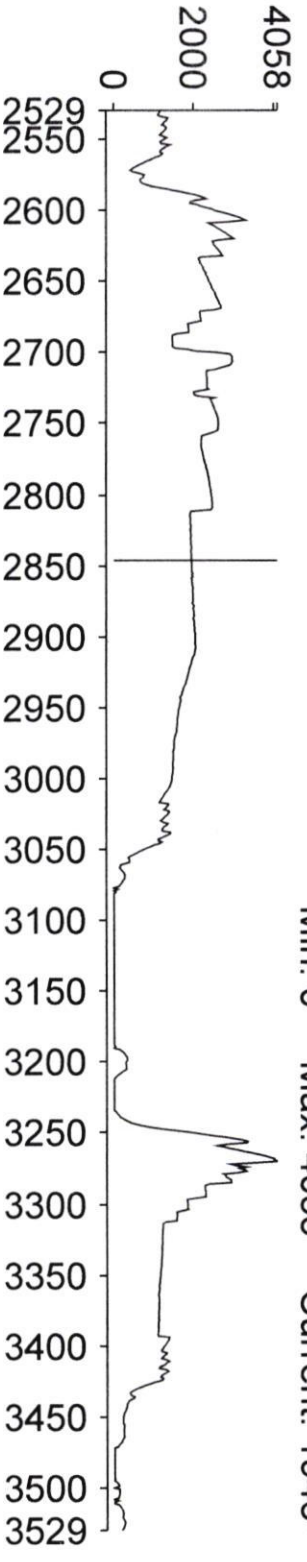
Engine Speed (RPM)

Min: 595 Max: 4255 Current: 1957



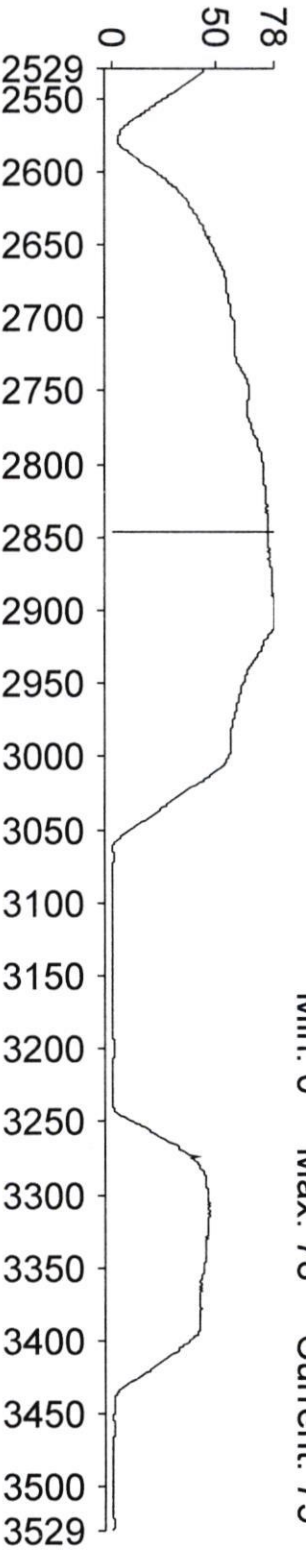
Transmission ISS (RPM)

Min: 0 Max: 4058 Current: 1946



Vehicle Speed Sensor (mph)

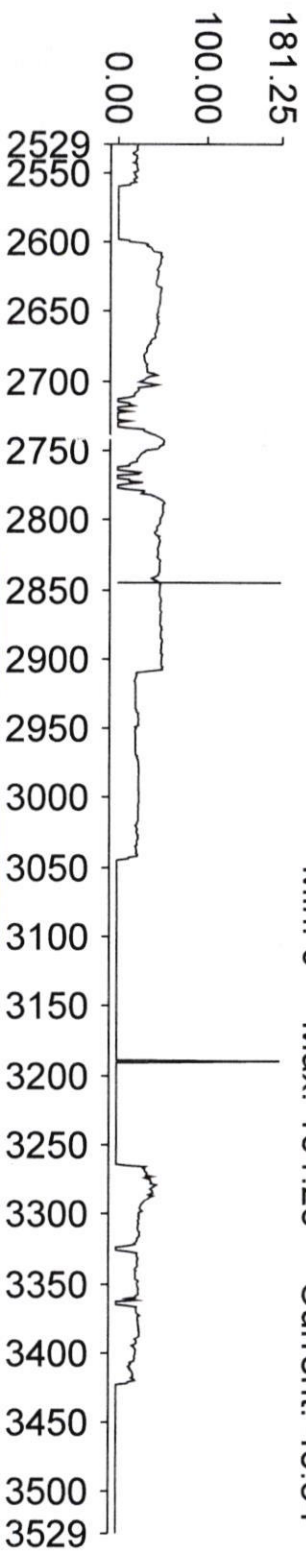
Min: 0 Max: 78 Current: 75



2018 Chevrolet Colorado (RWD) 3.6L V6 (LGZ)

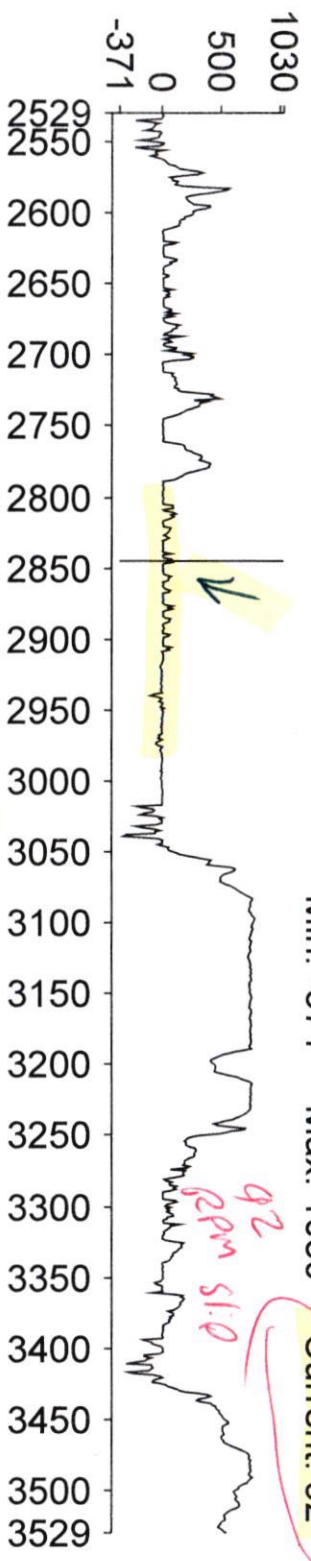
TCC Pressure Control Solenoid Valve Command (psi)

Min: 0 Max: 181.25 Current: 48.34



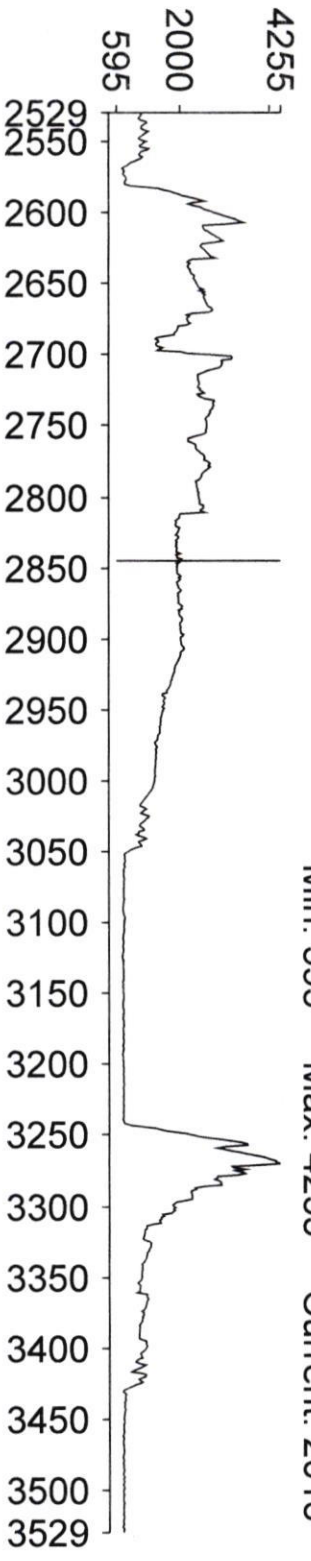
TCC Slip Speed (RPM)

Min: -371 Max: 1030 Current: 92



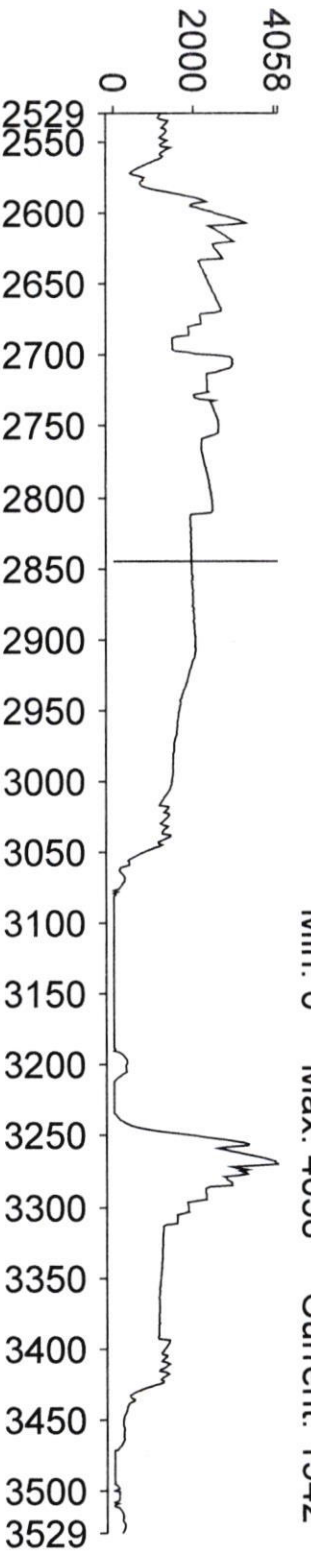
Engine Speed (RPM)

Min: 595 Max: 4255 Current: 2018



Transmission ISS (RPM)

Min: 0 Max: 4058 Current: 1942



Vehicle Speed Sensor (mph)

Min: 0 Max: 78 Current: 75

